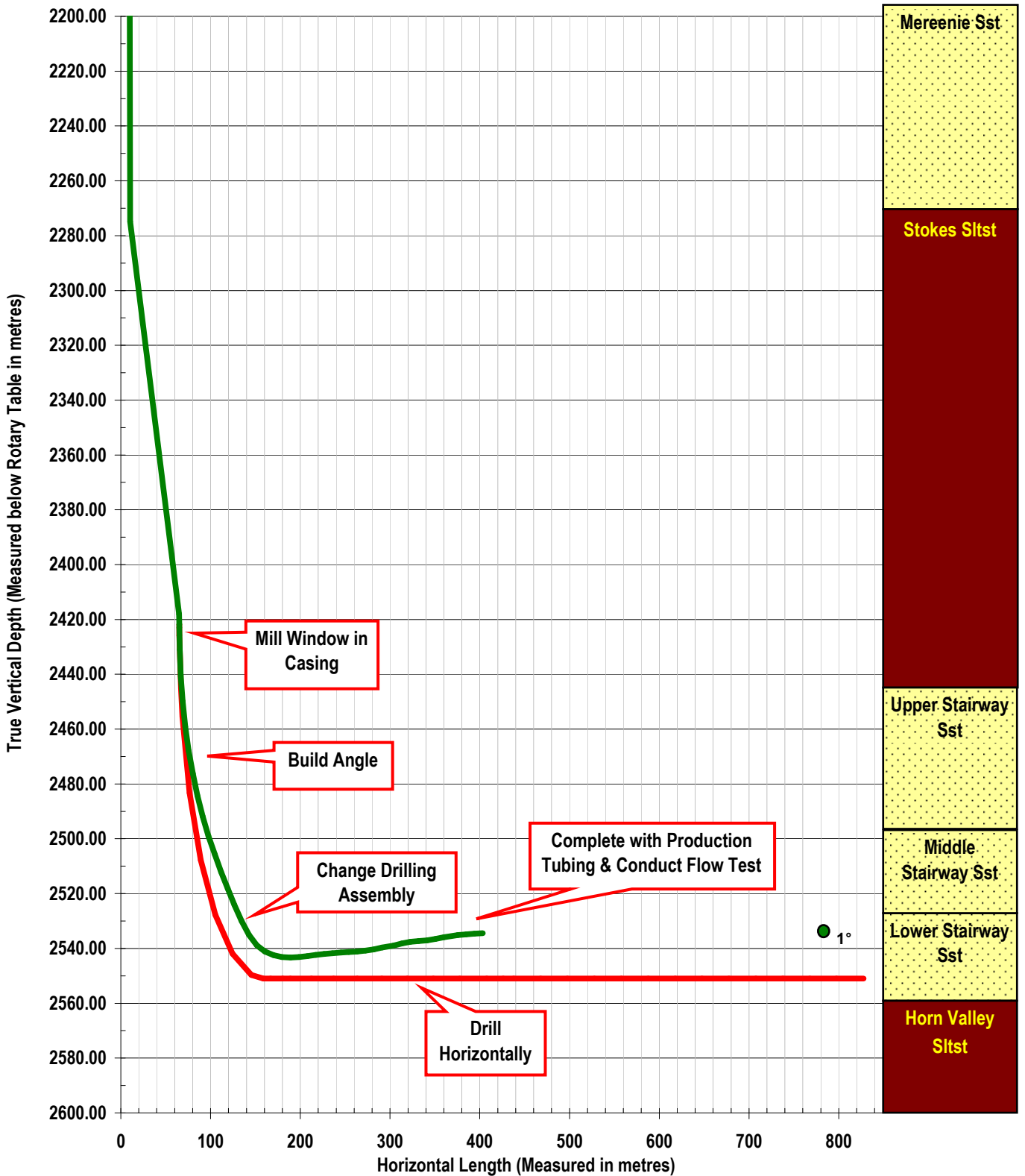


Surprise-1 Re-entry (Horizontal)
0600 CST 14.01.11

Re-entry Date: 11.11.19
Last Reported Depth: 2534m

● 1° Primary Oil Target

Note: Average Updip Slope Horizontal Section 2°



Legal Notice: This is a pictorial representation only and is subject to ongoing review and modification as new data is received and analysed. Completion for production is contingent upon successful evaluation.